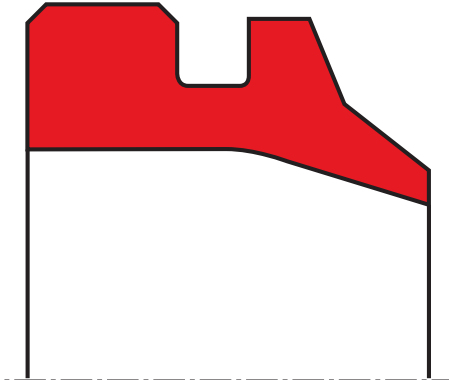


wiper A12-A

seal spec



description

wiper with secondary lip, the technically accurate closure at the cylinder is providing reliable protection, even for heavy contamination.

- the seal profile and close machining tolerances provide a good static seal for the outside diameter, assisting in the prevention of ingress of humidity and foreign matter via the outside diameter.
- the wiper seals by means of a secondary lip on the housing face. the tension of the secondary lip exerts pressure on the lip / shaft contact point, ensuring reliable sealing both in static and dynamic areas.
- the design of the wiping edge aids recovery of the residual oil film; any dirt is wiped off reliably.
- pressure build-up on the trailing side is to be avoided if possible.

application



not bolded symbols; please consult our technical for application limitations

category of profile

machined only.

single acting

area of application: hydraulics

- reciprocating rods on hydraulic cylinders.
- push rods, valve stems, equipment for underground working, equipment with major eccentricity, systems with highly abrasive contamination.
- fully mounted cylinders that are dip-coated do not impair the function of the wiper.
- materials must be selected according to operating requirements.

function:

A12-A wipers are designed to keep dust, dirt, sand and metal chips from the sealing and guiding elements, thereby avoiding abrasive damage caused by external contamination.

operating parameters & material

diameter range: up to 600 mm

material	temperature	max. surface speed	hydrolysis	dry running	wear resistance
s-mart PU	-30 °C ... +110 °C	4 m/s	-	+	++
s-mart HPU	-20 °C ... +110 °C	4 m/s	++	+	++
s-mart LTPU	-50 °C ... +110 °C	4 m/s	-	+	++
s-mart SPU	-20 °C ... +110 °C	5 m/s	++	++	++
s-mart GPU	-30 °C ... +110 °C	4 m/s	++	+	++
s-mart XPU	-30 °C ... +110 °C	4 m/s			
s-mart XHPU	-20 °C ... +110 °C	4 m/s			
s-mart XSPU	-20 °C ... +110 °C	5 m/s			

the stated operation conditions represent general indications. it is recommended not to use all maximum values simultaneously. surface speed limits apply only to the presence of adequate lubrication film.

++ ... particularly suitable o ... conditional suitable
+ ... suitable - ... not suitable

for detailed information regarding chemical resistance please refer to our "list of resistance". for increased chemical and thermal resistance rubber materials are to be preferred, polyurethan materials increase wear resistance.

**surface quality**

surface roughness	Rtmax (µm)	Ra (µm)
sliding surface	according to seal data	
bottom of groove	≤6,3	≤1,6
groove face	≤15	≤3

tolerance recommendation

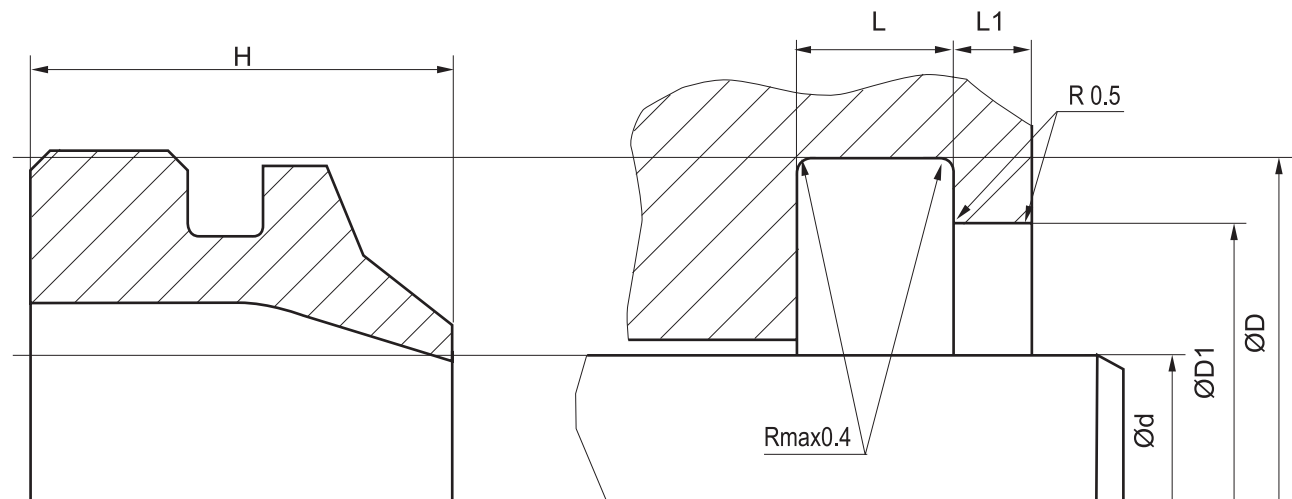
seal housing tolerances	
L < 10 mm	0,2
L ≥ 10 mm	±0,1
D1	H11
D	H11

mode of installation

the prerequisites for perfect functioning are careful fitting and an accurately dimensioned mounting space. in general, wipers snap easily into their housings when distorted into a kidney shape (over 20mm diameter).

seal & housing recommendations

please note that we are able to produce those profiles to your specific need or any non standard housing. for detail measurements, please see seal-mart catalog...



don't hesitate to contact our technical department for further information or for special requirements (temperature, speed etc.), so that suitable materials and/or designs can be recommended.